

SOLID PLASTIC
COLOR CARD

Certified Class B Fire Rating

100% Post-Consumer Recycled Content Available

Solid Core HDPE Material With No Air Pockets

Graffiti Resistant

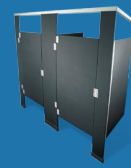
Fast, Reliable Lead Times

Excellent Stock Program

Heavy Duty Hardware

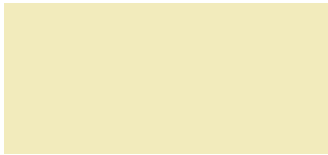
Industry Leading 25-Year Warranty

hadrian[®]



HIGH DENSITY POLYETHYLENE (HDPE)

CERTIFIED CLASS B FIRE RATING



 **238 ALMOND**



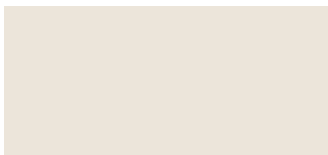
 **239 GRAY**



 **211 BLACK**



 **225 MOCHA**



 **223 LINEN**



213 BONE



215 BURGUNDY



 **231 SLATE**



222 HUNTER



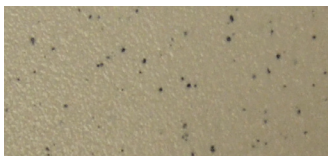
212 BLUEBERRY



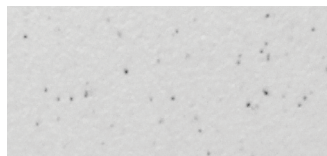
227 PAISLEY




218 FOSSIL



217 CANYON GRANITE



219 FROST GRANITE

 Headrail braced, ceiling hung and floor to ceiling solid plastic toilet partitions stocked in USA.

100% POST-CONSUMER RECYCLED CONTENT

NOT AVAILABLE IN CLASS B



241 EBONY

IN THE U.S.A.:

Hadrian Inc., 7420 Clover Avenue,
Mentor, Ohio, U.S.A. 44060
Telephone: (440) 942-9118 Fax: (440) 942-9618
U.S. toll free fax: 1-800-536-1469

IN CANADA AND AREAS OTHER THAN U.S.A.:

Hadrian Manufacturing Inc., 965 Syscon Road,
Burlington, Ontario, Canada L7L 5S3
Telephone: (905) 333-0300 Fax: (905) 333-1841
Canada toll free fax: 1-888-817-7701