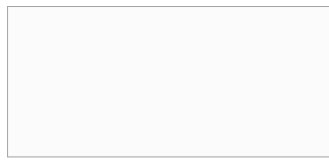


SOLID COLOR



 **603 ALMOND**



 **504 LINEN**



  **535 LIGHT GREY**



 **585 SAHARA**



609 COLONIAL BLUE



625 CREAM



630 HARDWARE



607 BORDEAUX



 **510 BLACK**



540 ROSE GREY



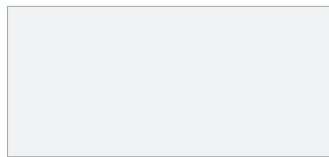
545 CHARCOAL



621 SLATE



624 TILE



500 WHITE

 Headrail braced toilet partitions stocked in USA

 Headrail braced toilet partitions stocked in CANADA

Headrail braced type 304, #4 brushed stainless steel toilet partitions are stocked in the USA. Lockers are not available in stainless steel.

For custom colors, a minimum of 20 units for toilet partitions and 100 units for lockers is required per color. Custom colors are subject to upcharge.

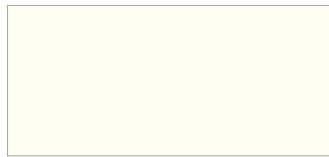
ANTI-GRAFFITI

Proven ASTM D6578 Graffiti Resistance to easily remove:

- Permanent Marker
- Lipstick
- Water Based Ink Marker
- Wax Crayon
- Spray Paint



826 KILIM BEIGE
Subject to upcharge



827 DOVER WHITE
Subject to upcharge



828 DOVETAIL
Subject to upcharge



829 DESERT
Subject to upcharge

SPECIAL EFFECTS



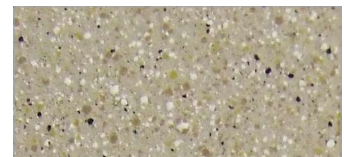
815 BRONZE METALLIC
Subject to upcharge



814 CAST IRON METALLIC
Subject to upcharge



831 NICKEL METALLIC
Subject to upcharge



812 PEBBLE BEACH
Subject to upcharge

IN THE U.S.A.:

Hadrian Inc., 7420 Clover Avenue,
Mentor, Ohio, U.S.A. 44060
Telephone: (440) 942-9118 Fax: (440) 942-9618
U.S. toll free fax: 1-800-536-1469

IN CANADA AND AREAS OTHER THAN U.S.A.:

Hadrian Manufacturing Inc., 965 Syscon Road,
Burlington, Ontario, Canada L7L 5S3
Telephone: (905) 333-0300 Fax: (905) 333-1841
Canada toll free fax: 1-888-817-7701

IN CHINA:

Hadrian (Shanghai) Trading Ltd.,
Units 9-11, No.2, 1501 Art Studio,
1501 Nan Suzhou Road, Jingan District
Shanghai, China 200040
Telephone: 86-21-6218-9066 Fax: 86-21-6218-9067